

Technical Data

Future DC, DF

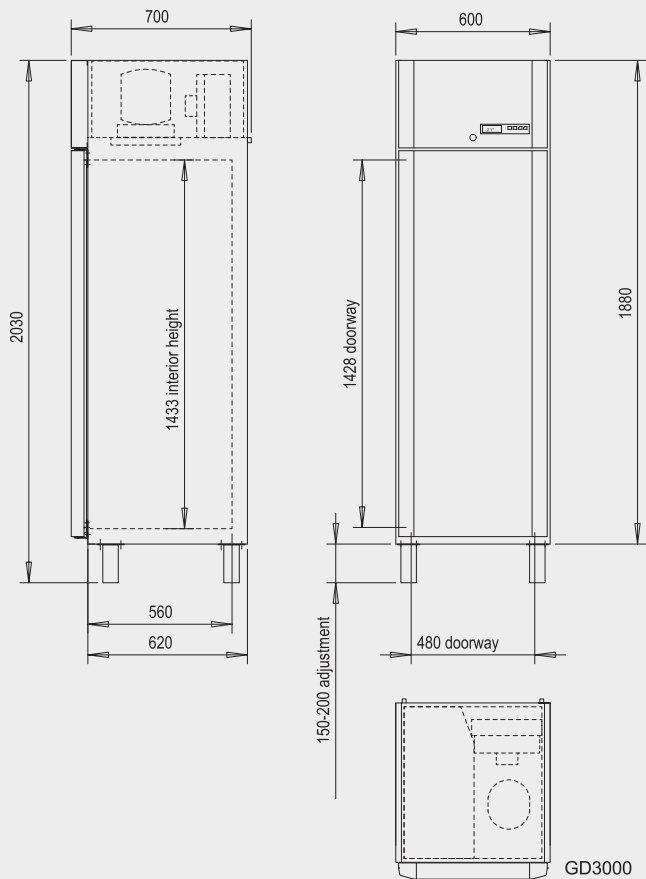


Technical data DC 520, DC 720, DF 520, DF 720

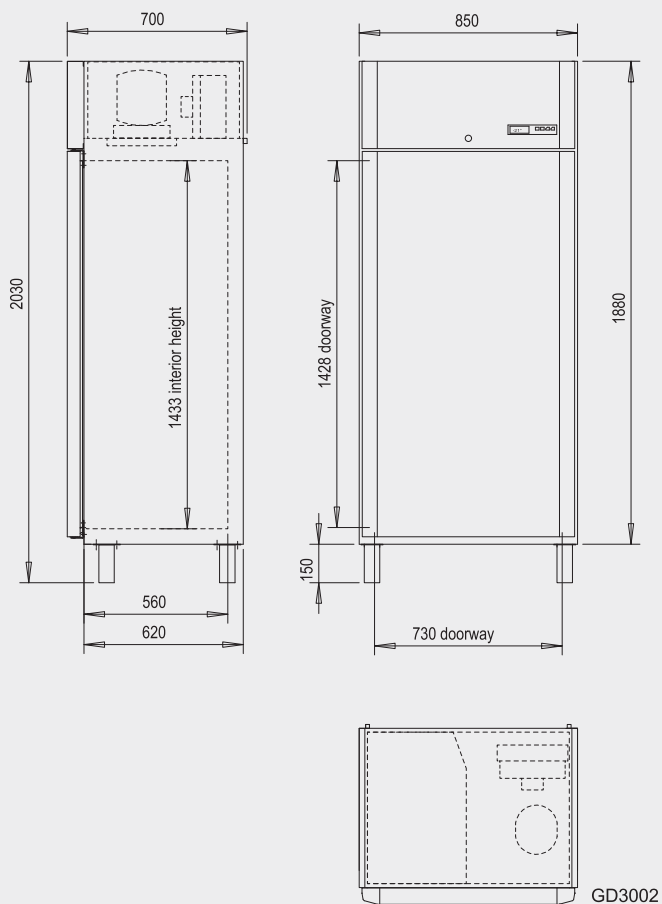
			DC 520	DC 720	DF 520	DF 720
Ext. dimension	width	(mm)	600	850	600	850
	depth	(mm)	700	700	700	700
	height	(mm)	2030	2030	2030	2030
Int. dimension	width	(mm)	480	730	480	730
	depth	(mm)	560	560	560	560
	height	(mm)	1430	1430	1430	1430
Net volume		(l)	291	471	291	471
Weight		(kg)	120	140	120	140
Shelves	width	(mm)	400	650	400	650
	depth	(mm)	530	530	530	530
Amb. Temperature		(°C)	+5...+43	+5...+43	+5...+43	+5...+43
Connection power		(W)	848	848	747	846
Cooling effect evaporator/condenser/ambient		(W)	1200	1200	542	719
			-10°C/+45°C/+32°C	-10°C/+45°C/+32°C	-30°C/+45°C/+32°C	-30°C/+45°C/+32°C
Refrigerant			R 404A / 350g	R 404A / 410g	R 404A / 425g	R 404A / 350g
Fuse (slow)		(A)	10	10	10	10
Voltage		(V)	230/50 Hz	230/50 Hz	230/50 Hz	230/50 Hz
Defrost			1	1	2	2
1. Air						
2. Hotgas						
3. Electric						

Exterior finish	Visible exterior surface: stainless sheet steel (AISI 304); alternative exterior surface: white polyester-coated sheet steel; back wall, top and bottom galvanised sheet steel; DC/DF Combi *4 in 1* available only in stainless steel AISI 304
Interior finish	Stainless sheet steel AISI 304
Insulation	60 mm foamed, CFC and HCFC free polyurethane
Door	Equipped with magnetic gasket, lock and spring hinges, door stays open when opening over 90°, reversible
Feet	4 pcs. adjustable 150-200 mm tubular stainless steel; alternative 4 pcs. castors height 110 mm with castors external height 1990 mm (530, 730 external height 2060 mm)
Inside	4 pcs. grill shelves, alternative stainless steel plate shelves, 30 mm difference adjustable pilasters
Refrigeration system	Hermetic, air conditioned, with heat exchanger and capillary; alternative for central cooling with built in exp. valve and magnetic valve
Evaporator	Fan assisted fin evaporator with automatic defrosting
Standard equipment	Electronic controlled digital thermometer/thermostat/defrost timer with acoustic and optical alarm, (adjustable low and high temperature alarm limits) and an option to external alarm (potential free relays contact),TTL -Mod Bus (RS 485) port for the option to connect to PC, extra sensor readiness Alternatives and accessories, see the price list
Note !	All data are given according to ISO 8561 standard except volumes according to EN441

DC 520, DF 520



DC 720, DF 720

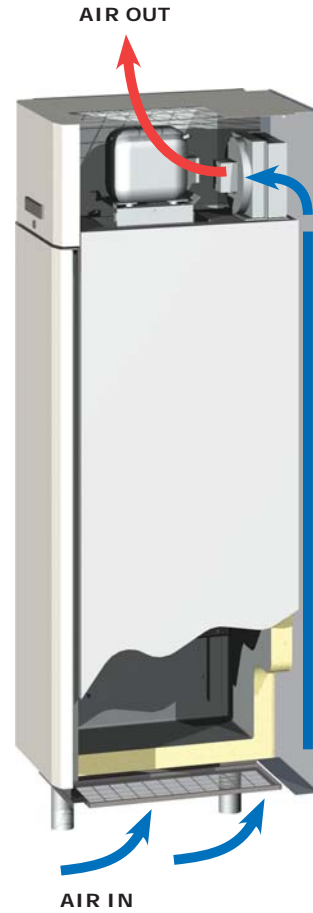
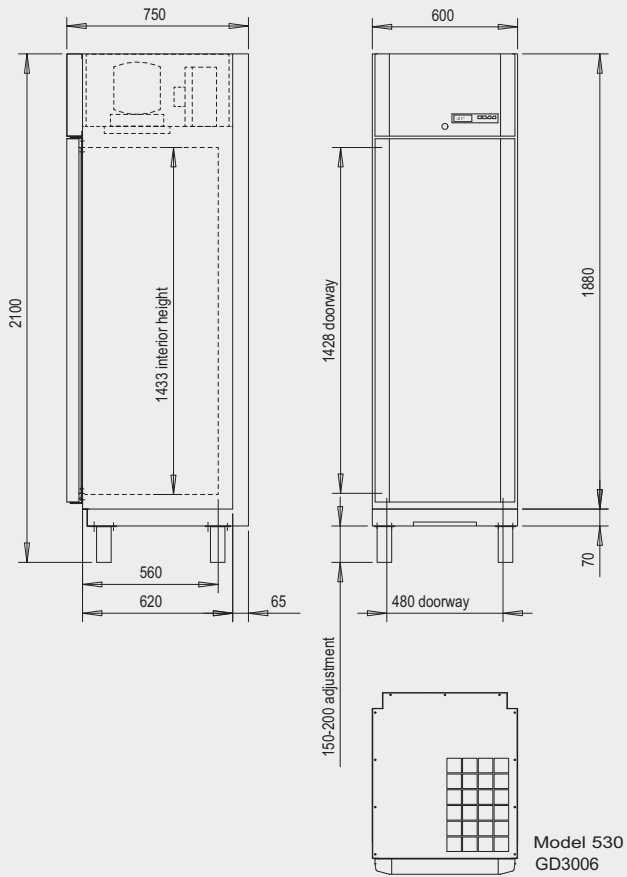


Technical data DC 530, DC 730, DF 530, DF 730

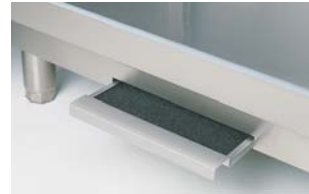
			DC 530	DC 730	DF 530	DF 730
Ext. dimension	width	(mm)	600	850	600	850
	depth	(mm)	750	750	750	750
	height	(mm)	2100	2100	2100	2100
Int. dimension	width	(mm)	480	730	480	730
	depth	(mm)	560	560	560	560
	height	(mm)	1430	1430	1430	1430
Net volume		(l)	291	471	291	471
Weight		(kg)	120	140	120	140
Shelves	width	(mm)	400	650	400	650
	depth	(mm)	530	530	530	530
Amb. Temperature		(°C)	+5...+43	+5...+43	+5...+43	+5...+43
Connection power		(W)	848	848	747	846
Cooling effect evaporator/condenser/ambient		(W)	1200	1200	542	719
			-10°C/+45°C/+32°C	-10°C/+45°C/+32°C	-30°C/+45°C/+32°C	-30°C/+45°C/+32°C
Refrigerant			R 404A / 350g	R 404A / 410g	R 404A / 425g	R 404A / 350g
Fuse (slow)		(A)	10	10	10	10
Voltage		(V)	230/50 Hz	230/50 Hz	230/50 Hz	230/50 Hz
Defrost			1	1	2	2
1. Air						
2. Hotgas						
3. Electric						

Exterior finish	Visible exterior surface: stainless sheet steel (AISI 304); alternative exterior surface: white polyester-coated sheet steel; back wall, top and bottom galvanised sheet steel; DC/DF Combi „4 in 1“ available only in stainless steel AISI 304
Interior finish	Stainless sheet steel AISI 304
Insulation	60 mm foamed, CFC and HCFC free polyurethane
Door	Equipped with magnetic gasket, lock and spring hinges, door stays open when opening over 90°, reversible
Feet	4 pcs. adjustable 150-200 mm tubular stainless steel; alternative 4 pcs. castors height 110 mm with castors external height 1990 mm (530, 730 external height 2060 mm)
Inside	4 pcs. grill shelves, alternative stainless steel plate shelves, 30 mm difference adjustable pilasters
Refrigeration system	Hermetic, air conditioned, with heat exchanger and capillary; alternative for central cooling with built in exp. valve and magnetic valve
Evaporator	Fan assisted fin evaporator with automatic defrosting
Standard equipment	Electronic controlled digital thermometer/thermostat/defrost timer with acoustic and optical alarm, (adjustable low and high temperature alarm limits) and an option to external alarm (potential free relays contact),TTL -Mod Bus (RS 485) port for the option to connect to PC, extra sensor readiness Alternatives and accessories, see the price list
Note !	All data are given according to ISO 8561 standard except volumes according to EN441

DC 530, DF 530



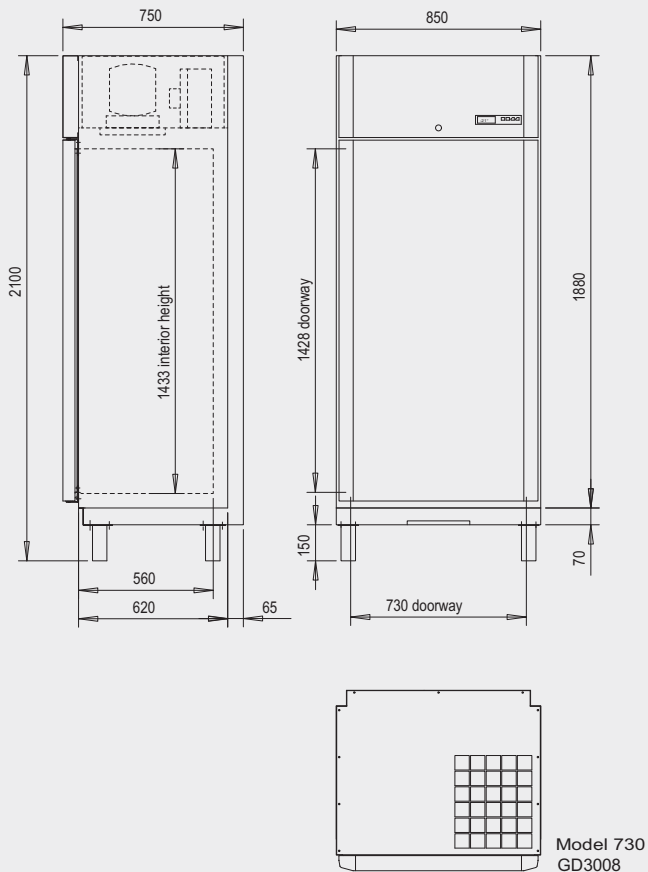
AIR IN - FILTER



AIR OUT



DC 730, DF 730



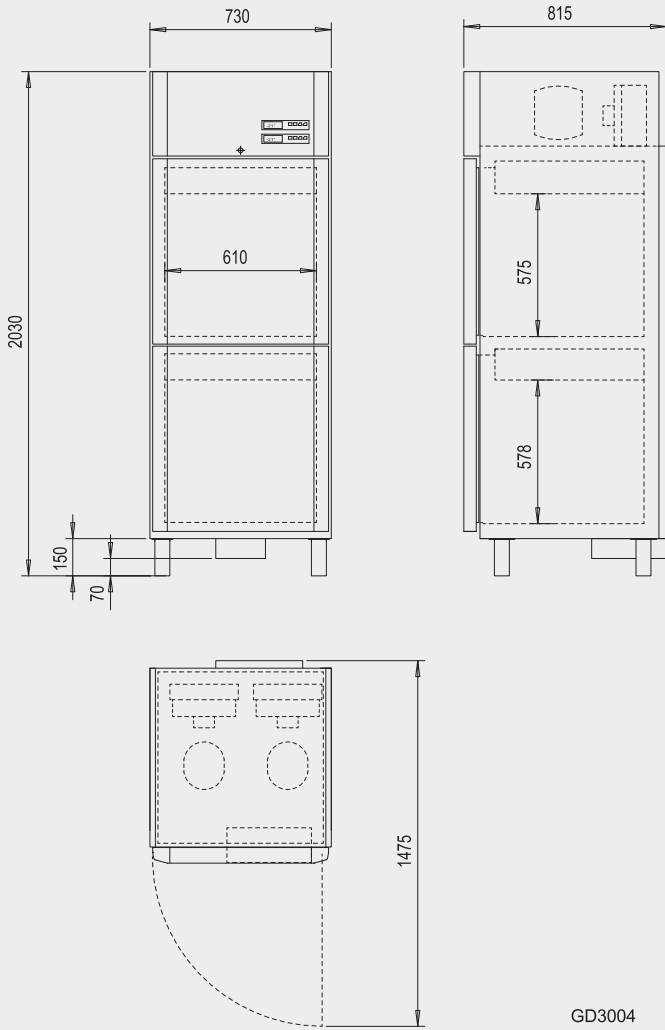
Technical data DC/DF 722 COMBI 4 in 1

		DC/DF 722	
		COMBI 4 in 1	
Ext. dimension	width	(mm)	730
	depth	(mm)	815
	height	(mm)	2030
Int. dimension	width	(mm)	610
	depth	(mm)	660
	height	(mm)	2 x 565
Net volume		(l)	2 x 156
Weight		(kg)	160
Shelves	width	(mm)	530
	depth	(mm)	650
Amb. Temperature		(°C)	+5...+43
Connection power		(W)	1700
Cooling effect evaporator/condenser/ambient		(W)	542/353
			-10°C/+45°C/+32°C -30°C/+45°C/+32°C
Refrigerant			R 404A / 240g R 404A / 250g
Fuse (slow)		(A)	16
Voltage		(V)	230/50 Hz
Defrost			1 / 3
1. Air			
2. Hotgas			
3. Electric			

Exterior finish	Visible exterior surface: stainless sheet steel (AISI 304); alternative exterior surface: white polyester-coated sheet steel; back wall, top and bottom galvanised sheet steel; DC/DF Combi "4 in 1" available only in stainless steel AISI 304
Interior finish	Stainless sheet steel AISI 304
Insulation	60 mm foamed, CFC and HCFC free polyurethane
Door	Equipped with magnetic gasket, lock and spring hinges, door stays open when opening over 90°, reversible
Feet	4 pcs. adjustable 150-200 mm tubular stainless steel; alternative 4 pcs. castors height 110 mm with castors external height 1990 mm (530, 730 external height 2060 mm)
Inside	4 pcs. grill shelves, alternative stainless steel plate shelves, 30 mm difference adjustable pilasters
Refrigeration system	Hermetic, air conditioned, with heat exchanger and capillary; alternative for central cooling with built in exp. valve and magnetic valve
Evaporator	Fan assisted fin evaporator with automatic defrosting
Standard equipment	Electronic controlled digital thermometer/thermostat/defrost timer with acoustic and optical alarm, (adjustable low and high temperature alarm limits) and an option to external alarm (potential free relays contact), TTL -Mod Bus (RS 485) port for the option to connect to PC, extra sensor readiness Alternatives and accessories, see the price list
Note !	All data are given according to ISO 8561 standard except volumes according to EN441

Dimension drawings DC/DF 722 COMBI 4 in 1

DC/DF 722



GD3004



DC = Deep Chiller

temperature range +1...+12 °C when switched to storing mode

Quick freezing capacity of cabinet DC 520 is 12 kg per 90 minutes +70...+3 °C with 25 mm layer thickness and 37 kg per 4 hours +60...+6 °C with 50 mm layer thickness according to the regulation 905/2007 valid in Finland

Quick freezing capacity of cabinet DC 720 is 18 kg per 90 minutes +70...+3 °C with 25 mm layer thickness and 47 kg per 4 hours +60...+6 °C with 50 mm layer thickness according to the regulation 905/2007 valid in Finland

DF = Deep Freezer

temperature range when switched to storing mode is
-18...-26 °C

Freezing/chilling capacity of cabinet DF 520 with 50 mm layer thickness is
60 kg per 24 hours +0...-18 °C

Freezing/chilling capacity of cabinet DF 720 with 50 mm layer thickness is
80 kg per 24 hours +0...-18 °C

DC/DF 722 "4 in 1"

Upper compartment of the cabinet

- 1) after freezing and chilling period the equipment automatically switches to cold storing mode
 - 2) normal cold storing when chilling timer is not running
- Temperature range +1...+12 °C when switched to storing mode.

Lower compartment of the cabinet

- 3) after freezing/icing and chilling period the equipment automatically switches to deep-freeze storing mode
 - 4) normal deep-freeze storing when freezing timer is not running
- Temperature range -18...-26 °C when switched to storing mode.



PORKKA

Porkka Finland Oy is an internationally recognised designer and manufacturer of Refrigeration and Food Storage/Display Equipment.

Porkka Finland Oy is an internationally recognised designer and manufacturer of Refrigeration and Food Storage/Display Equipment. The range incorporates Chilled, Frozen and Heated options. Major clients include commercial kitchens, restaurants, fast food outlets, hotels, industrial canteens, hospitals, laboratories and retailers throughout the World.

Our main markets outside of Finland include Scandinavia, United Kingdom, Germany, Switzerland, Holland, Belgium, Russia and the Baltic regions. 80% of the companies' turnover is derived from foreign transactions and exports. On going and adaptive development by numerous foreign subsidiaries and representatives ensures our continued growth.

Porkka's success is based on decades of experience, customer focused design and continuous product development.

Porkka Finland Oy is part of the **Huurre Group**. Porkka and Huurre brands are well known for their quality and reliability throughout the world.



Porkka Finland Oy designs and manufactures to a quality standard ISO 9001 which is controlled and certified by Lloyd's Register Quality Assurance. We also hold the environmental certificate ISO 14001 which also has been issued by LRQA, where environment impact in production is kept to a minimum.

Porkka Finland Oy reserves the right to make any changes without prior notice.

Porkka Finland Oy
Soisalmentie 3
FI-15860 Hollola, Finland
Tel. +358 20 5555 12
Fax. +358 20 5555 497
e-mail: porkka@huurre.com
www.porkka.fi

Porkka Scandinavia AB
Industrigatan 21
S-61933 Trosa, Sverige
Tel. +46 156 348 40
Fax +46 156 167 50
e-post: porkka@porkka.se
www.porkka.se

Porkka Norge AS
Lensmannslia 30
N-1386 Asker, Norge
Tel. +47 66 98 77 77
Fax +47 66 98 77 88
e-post: salg@porkka.no
www.porkka.no

Porkka (U.K.) Limited
29B Greenhill Crescent
Watford Business Park, Watford
Hertfordshire, WD18 8YB, UK
Tel. +44 1923 23 36 75
Fax +44 1923 80 57 17
e-mail: sales@porkka.co.uk
www.porkka.co.uk